

STRATHFIELD MUNICIPAL COUNCIL

# COMMUNITY SAFETY STRATEGY

2024 - 2028

Adopted by Council: March 2024  
Effective from: June 2024



STRATHFIELD  
COUNCIL



# RECOGNITION OF TRADITIONAL CUSTODIANS

**ACKNOWLEDGMENT OF COUNTRY** Strathfield Council would like to show respect and acknowledge the Wangal people, the Traditional Custodians of the land on which the Strathfield area is located. We pay respect to Elders past, present and emerging.



# CONTENTS

Acknowledgement of Country	3
Message from the Mayor	6
A Snapshot of Strathfield	9
Introduction	10
Community Safety	12
<i>The Role of Government in Community Safety</i>	
<i>Council Role in Reducing Crime and Improving Community Wellbeing</i>	
Community Safety Strategic Framework	14
What our community says about safety	15
Priority 1: Feeling Safe in Public Spaces	16
Priority 2: Building Safe Neighbourhoods	18
Priority 3: Staying Safe in Strathfield	21
Priority 4: Collaborating for community safety	22
Strathfield Community Safety Action Plan	24
Priority 1: Safe Public Places	24
Priority 2: Safe Neighbourhoods	27
Priority 3: Staying Safe	28
Priority 4: Collaborating for a safe community	31
Appendix: Strathfield Crime Statistics	32

# Message from the Mayor

## Councillor Karen Pensabene

Community safety is important to the Strathfield community, for those who live, work, study and visit our area. Our priority is to ensure that Strathfield is a safe and socially cohesive community.

Negative perceptions of safety can be a barrier to access of our town centres, local open space or even walking around our streets. This can impact on the physical and mental health and community wellbeing in many different ways.

Council has a role as a provider, facilitator and advocate to improve community safety and help to prevent crime in partnership with local police from Auburn and Burwood Police Area Command (PACs).

The Community Safety Strategy supports our Community Strategic Plan – Strathfield 2035. Community safety programs and actions are set out in Council’s Delivery Program and Operational Plan.

This Community Safety Strategy sets out four priorities that Council will deliver on over the next four years. The strategy that is based on working collaboratively with our community, relevant government and non-government stakeholders and local police to ensure the following priorities are met:

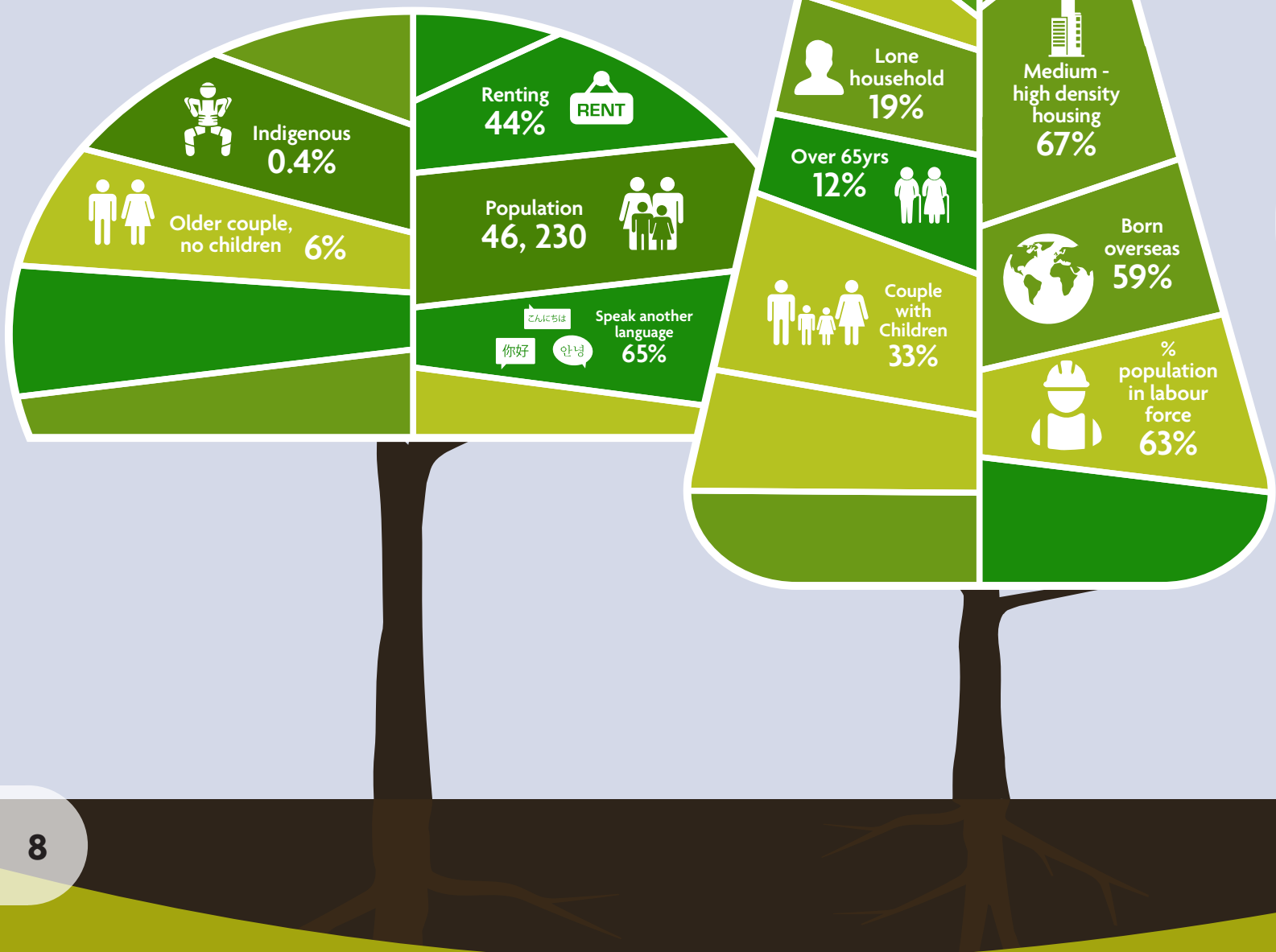
- Feeling Safe in Public Places
- Building Safe Neighbourhoods
- Staying Safe in Strathfield
- Collaborating for Community Safety

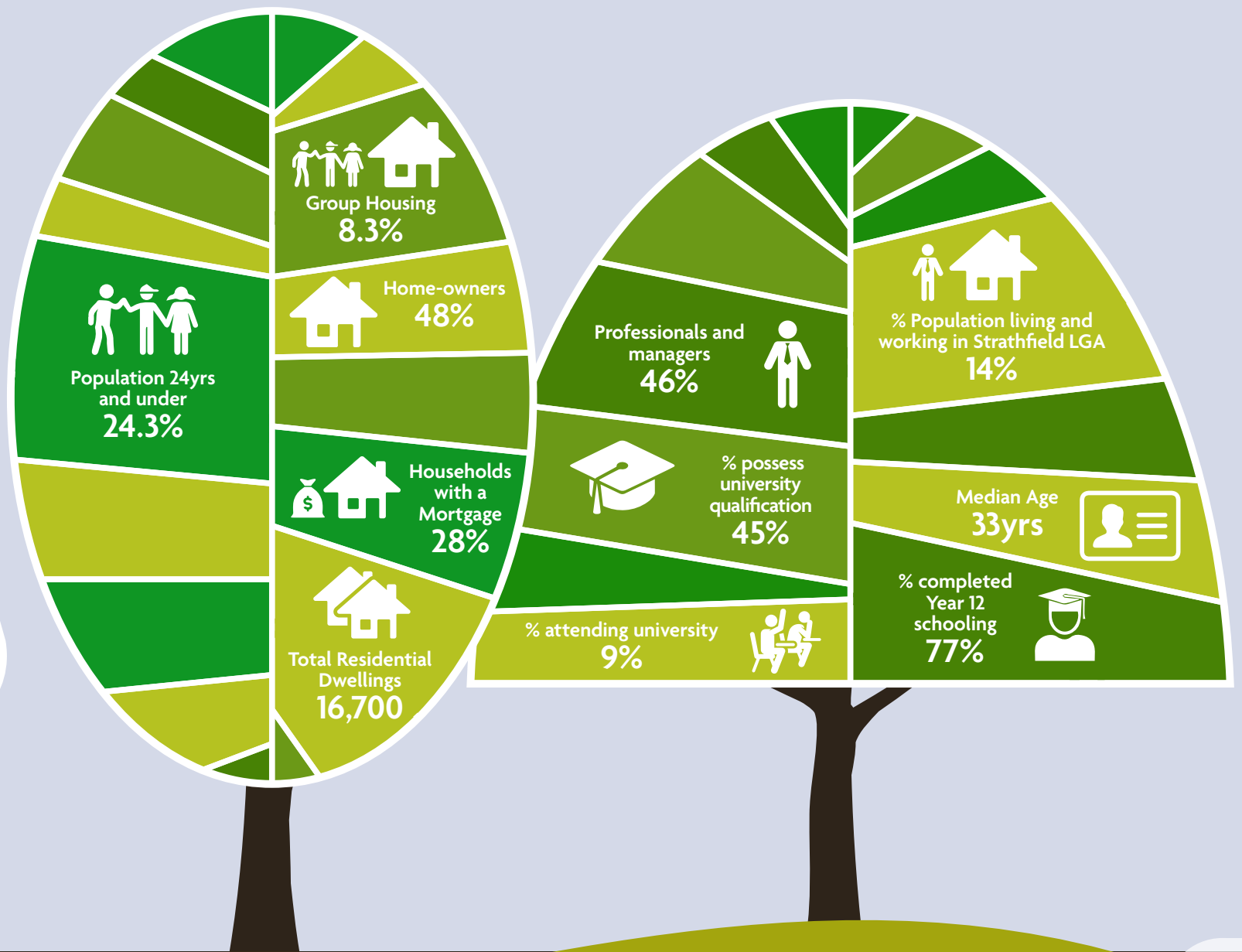
I look forward to engaging with Councillors, staff, NSW Police Force and the community to ensure the Community Safety Strategy is delivered over the next four years and all those who live, work, study or visit can feel safe in the Strathfield Local Government Area (LGA).





# A snapshot of Strathfield





# INTRODUCTION

Community safety requires a collaborative approach to ensure that actions are put in place to address antisocial behaviour and crime prevention. These actions are planned to ensure that safety is an ongoing activity of community living and wellbeing.

This strategy builds on the progress of the previous strategies. The 2020-2024 Community Safety Strategy was reviewed and the table below highlights the key achievements by Council in collaboration with key stakeholders over the life of the plan:

## Community Safety Strategy 2020-2024 Actions and Achievements

---

Supported homeless people through the Rough Sleepers program

---

Improved street lighting

---

Improved footpaths and cycleways and street amenities

---

Attended safety audits to identify and action risks to safety

---

Addressed graffiti management and developed a Graffiti Management Policy

---

Commissioned public art and graffiti prevention murals to enhance the public domains

---

Provided Community Safety forums with discussions on crime prevention

---

Addressed road safety initiatives

---

Developed a Child Safety Policy and included child safety provisions in the Council Code of Conduct

---

Addressed community safety and provided support through the Helping Hand program during the COVID pandemic

---

Became a stockist of Escabags to support those fleeing domestic and family violence

---



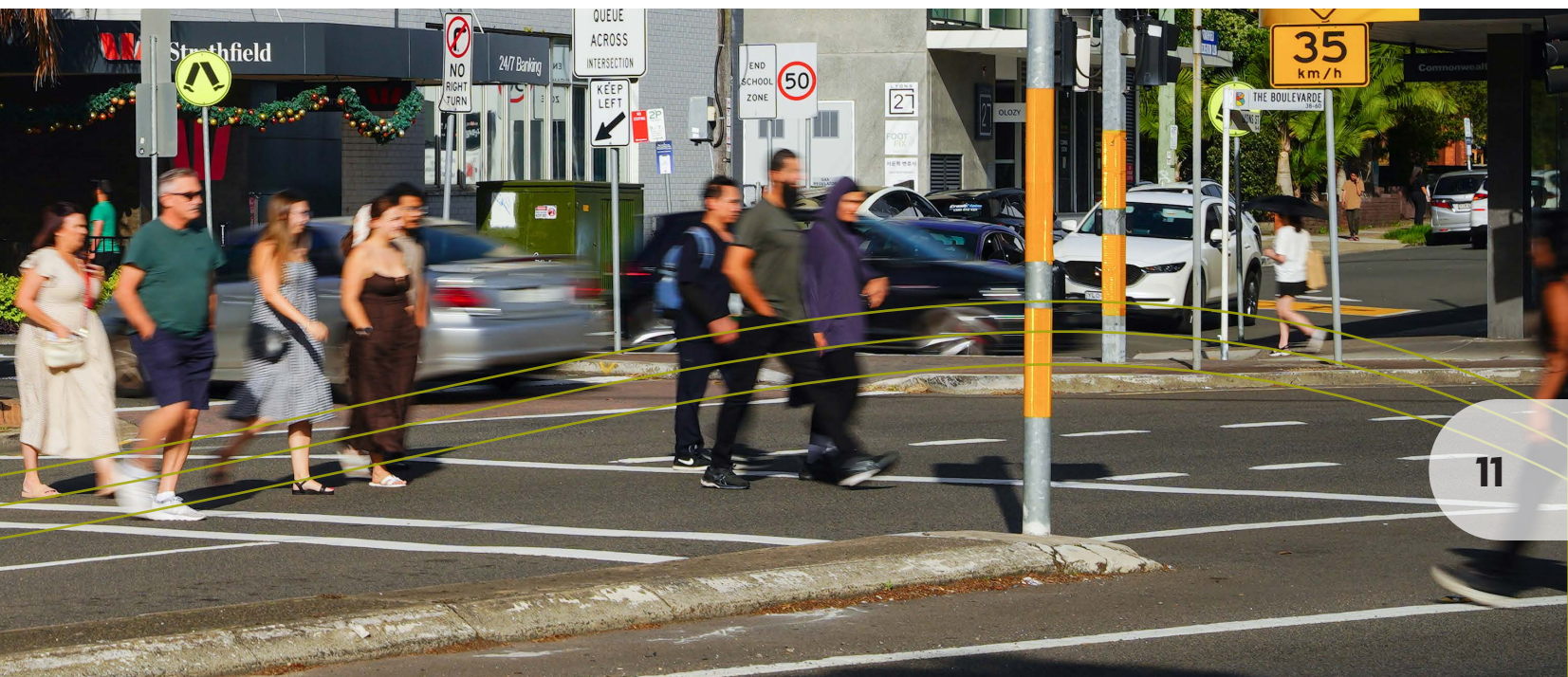
Strathfield Council's Community Safety Strategy 2024-2028 is a four year framework which continues to support Council's vision of a safe, inclusive and connected community that lives in harmony with its built and natural environment.

The Strategy addresses community safety through a range of perspectives and is delivered in accordance with the themes of the Community Strategic Plan - Strathfield 2035 and other relevant Council policies. The perspectives of safety that are to be addressed over the next four years are:

- The safe design and planning for our community
- The prevention of crime and anti-social behaviour
- The connection and support for vulnerable members of our community
- Providing services and programs to support social inclusion and wellbeing
- The building of community resilience to address and avert future disasters

The Strategy addresses the valuable role of working in partnership with the community and key stakeholders to ensure Strathfield is a safe and vibrant place to live, work, visit or study. Although the Strathfield LGA is regarded as a generally safe place, liveability is enhanced through actions which support crime prevention initiatives and address community safety concerns such as anti-social behaviours.

*“Although the Strathfield LGA is regarded as a generally safe place, liveability is enhanced through actions which support crime prevention initiatives and address community safety concerns.”*



# COMMUNITY SAFETY

Safety is the protection from danger, risk or injury and community safety relates to reducing crime, controlling risk, preventing injury and supporting the whole community.

The safety of the Strathfield community is the responsibility of all who live, work, study and visit the area as well as all agencies, organisations and businesses who deliver services to the Strathfield LGA.

## The Role of Government in Community Safety

Federal Government provides direction on policy to address safety issues and provides funding for safety and crime prevention measures. Research and information on crime is provided by the Australian Institute of Criminology (AIC), which is part of the Attorney-General's portfolio and accountable to the Attorney-General.

State Government plays a major role in community safety as it has a primary responsibility for law enforcement and crime prevention with the NSW Police. The state government is also responsible for emergency services including ambulance, fire and State Emergency Services (SES), and public health matters are the responsibility of NSW Health. The Bureau of Crime Statistics and Research (BOCSAR) is a statistical and research agency within the NSW Department of Communities and Justice and was established in 1969.

Local Government has a role to support safety and community wellbeing and create a cohesive and socially inclusive environment. Local Government is not directly responsible for crime prevention but can support safety by creating safe public spaces and developing partnerships with key stakeholders to deliver initiatives that enhance community safety.

## Council Role in Reducing Crime and Improving Community Wellbeing

Initiative	Explanation
Advocacy	Providing advice or representations to state and federal government and their departments and agencies on issues concerning community safety
Regulatory functions	Provide regulatory functions that enable management of certain anti-social practices and behaviour in public spaces such as illegal dumping and vandalism
Analysing Trends	Monitoring and researches crime trends in the LGA which influence actions, representations and development of education programs and safety information for the community
Plan and Develop	Develop plans and policies to address community safety such as infrastructure that incorporates safety by design
Build and Maintain	Undertake projects to build and maintain parks, playgrounds, sporting fields and town centres to a high standard to support community wellbeing and safety
Work in Partnerships	Work collaboratively in partnership to address community safety issues with Local Police Area Commands
Service Provision	Provide services that enhance community safety such as road safety programs and information, graffiti removal, CCTV, management of illegal dumping and community development services and programs
Emergency Management	Council works in collaboration with Health and Emergency Services to ensure safety during emergencies

Strathfield Council's involvement in community safety and crime prevention initiatives is delivered in partnership with NSW Police and other government and non-government organisations. Strathfield Council addresses community safety with a range of initiatives that include:

- CCTV
- Domestic Violence prevention
- Crime Prevention Through Environmental Design (CPTED)
- Graffiti management
- Lighting and wayfinding
- Regulatory compliance
- Road safety and traffic control
- Safe footpaths and cycleways
- Implementing child safe standards
- Responding to homelessness
- Waste management, including management of illegal dumping

# COMMUNITY SAFETY STRATEGIC FRAMEWORK

Community safety is about recognising the need for all sections of the community to work together to create a safer environment for people to live, work, study and visit.

The Community Safety Strategy is an important tool to achieve Council’s vision for a safe, inclusive and connected community. The Community Safety Strategy underpins the Community Strategic Plan – Strathfield 2035, and community safety is a commitment of Council’s Delivery Program and Operational Plan.

## The Community Strategic Plan themes, goals and actions that address community safety are:

Theme	Goal	Delivery Program Principal Activity
<b>Theme 2:</b> Community Wellbeing	<b>2.1</b> Culturally diverse, socially cohesive and connected communities	<b>2.1.1.1</b> Broaden access and availability of community facilities and programs and support local community groups and networks
<b>Theme 2:</b> Community Wellbeing	<b>2.3</b> Safe, resilient and accessible local areas	<b>2.3.1.1</b> Enhance Strathfield’s reputation as a safe community by developing partnerships and building community awareness and capacity
<b>Theme 3:</b> Celebrating Culture and Place	<b>3.1</b> Enticing, vibrant and safe centres blending services and social connectivity	<b>3.1.1.1</b> In collaboration, plan and deliver vibrant, active and diverse services and activities in local town and village centres and commercial areas
<b>Theme 4:</b> Liveable Neighbourhoods	<b>4.1</b> Quality, liveable and sustainable urban design and development	<b>4.1.1.1</b> Prepare, review and implement planning controls that respect local character, heritage and deliver quality liveability, aesthetics and sustainable development in the Strathfield LGA
<b>Theme 4:</b> Liveable Neighbourhoods	<b>4.2</b> Clean, attractive and well maintained neighbourhoods and public domains	<b>4.2.1.1</b> Deliver efficient waste services and community education that respond to community demand and improve resource recovery and waste management practices

Other strategies and plans that interact with Community Safety Strategy include:

- Local Strategic Planning Statement
- Disability Inclusion Action Plan
- Public Art Policy
- Library Strategy
- Graffiti Management Policy

# WHAT OUR COMMUNITY SAYS ABOUT SAFETY

Community Safety is an important attribute to the liveability of the Strathfield LGA. The perception of the Strathfield LGA being a safe place is important for liveability of current residents, students, workers and business, but also a key attractor for prospective residents and business.

Council commissioned the 'Living in Strathfield Views Survey' in 2021. The survey found that 'feeling safe' importance was highly rated at 74% (compared to the Australian index of 69%) and respondents experience was rated 76%. Community safety was the most important liveability aspect for Strathfield Council residents overall. Local residents placed a higher value on 'feeling safe' and reported a more positive local area experience when compared to all other external benchmarks in the survey.

Engagement for the Community Strategic Plan (CSP) in 2021-2022 placed Strathfield LGA being 'a safe place to live, work or study' as one of the top 10 community issues. While community safety is identified as a goal in the CSP and its delivery and operational plans, it is also acknowledged that many aspects of community safety are not Council responsibility and are under the control of NSW Government such as NSW Police Services.

## Current trends

The most recent Council Performance Survey was held in 2023 and surveyed respondents about their views on control of graffiti and vandalism in the LGA and feeling safe in local streets, suburbs and local public transport. Previous surveys were held in 2021 and 2019. Community views on graffiti and vandalism and feeling safe on local public transport have remained consistent. There was a decline in community views on feeling safe in streets and suburbs between 2019 and 2023.

Issue	2019 (Baseline)	2023 Result
Feeling safe in their street	71%	67%
Feeling safe in their suburb (moving around)	74%	68%
Feeling safe on local public transport	85%	84%
Control of graffiti and vandalism in LGA	64%	64%

# STRATHFIELD SAFETY PRIORITIES

## Priority 1: Feeling Safe in Public Spaces

### 1.1 Crime Prevention Through Environmental Design (CPTED)

Crime Prevention through Environmental Design (CPTED) describes an approach to crime prevention that accounts for environmental factors and how users in an environment may interact with the physical space.

Design principles can be used to address and reduce inherent anti-social behaviours and criminal activities by altering and improving the space. Fit for purpose anti-graffiti initiatives are identified and implemented as part of this process. Such initiatives include green screening of fences and walls, lighting and public art including commissioned murals.

### 1.2 Activating Town Centres and Public Places

Activating a public space makes it feel welcoming to a diverse range of people, and open to a variety of uses. Quality and appropriately activated public spaces are key to quality of life for community use.

Activation is about people and the social life of public space and should enhance the feeling of safety through passive surveillance 'eyes on the street' and provide social connection for people. Council events and activities help activate public spaces and the town centres promoting social inclusion and enjoyment.

### 1.3 Graffiti Removal

Council's Graffiti Management Program involves routine inspections and removal by Council staff and local community groups throughout the Strathfield LGA. The program aims to eliminate graffiti through rapid removal to prevent the recurrence.

Council is responsible for the removal of graffiti from

Council property such as bus shelters, signs, council buildings, parks and playground equipment, roads and footpaths.

Strathfield Council currently addresses rapid graffiti removal and has installed four commissioned murals as a graffiti prevention strategy in the 2023/24 financial year and will continue to look for opportunities for grants and suitable places for future murals to address graffiti. Graffiti is often an emotive issue, with our community often reporting a negative impact in relation to cleanliness and safety.

### 1.4 Surveillance by CCTV

NSW Police Force supports programs that aim to reduce or prevent crime. It is recognised that CCTV can be an effective crime prevention program when it is part of a broader crime prevention and community safety strategy. While it is not clear how effective CCTV is in deterring or reducing crime, research evidence suggests that it can be an effective strategy is situational crime prevention as one of a range of crime prevention strategies. It appears from the research that CCTV may be effective in addressing property crime and some types of assault and robbery.

CCTV can be an effective tool in addressing property crime, illegal dumping of waste and deterring some types of assaults and robberies and is best utilised as part of a program of crime prevention strategies.

Strathfield Council has an extensive CCTV camera network in town centres located in the Strathfield Local Government Area. The information contained in the footage recorded is collected for law enforcement purposes and shall only be disclosed to persons or bodies who have a legitimate and lawful right or

interest in receiving such information.

When footage is required by NSW Police for review, all requests must be received in writing stating the time and date of the incident for approval and release of the relevant information, by the General Manager or his delegate. The requesting officer is to indicate the location of the incident and the relevant camera/location from which the footage would have been recorded.

### 1.1 - 1.5 Road Safety

Local councils are well placed to plan, implement and deliver road safety projects relevant to their communities. Councils interact regularly with local residents, schools, government agencies, businesses and other stakeholders. Council officers have a detailed knowledge of their local road networks, traffic management issues and road crash history. Transport for NSW (TfNSW) works in partnership with local councils to co-fund Road Safety Officer (RSO) position and contribute funding projects targeting road safety issues at a local level. Strathfield Council provides a range of road safety programs and services which include:

- School Safety Forums and Online based programs
- Child Restraint Checking Days
- Graduated Licensing Scheme (GLS) young driver workshops to assist the teachers of learner drivers
- Road Safety for Seniors as part of the Stepping On Program
- Pedestrian Safety in HPAA Zones
- Road Safety Audits and community consultation for crash prevention in the LGA
- Supporting Transport for NSW in distribution of road safety campaigns such as Bus Safety, School Zones, Drink Driving and Holiday Periods and Speed Prevention on Local Roads



## Priority 2: Building Safe Neighbourhoods

### 2.1 Social cohesion and resilience

Neighbourhoods and local government areas thrive when everyone feels valued and included as part of their community and conversely, being a victim of, or involved in crime, is associated with communities that experience high levels of social exclusion.

Social inclusion and safety are central to creating a cohesive society and a strong economy that enables future growth and prosperity. Strathfield is a diverse community and it is important for its residents to be included and valued for who they are.

Socially cohesive communities tend to support healthy behaviours and provide a sense of belonging and sense of community. People that are connected with their neighbourhoods and to their community have a greater sense of wellbeing and safety.

Providing entertainment in the public domain with community and cultural events assists in building social connection, as well as providing facilities that enable social gatherings.

Council is responsible for building the community's awareness of safety regulations to ensure a safe and resilient community. These regulations apply to homes and neighbourhoods including swimming pool fencing, overgrown residential properties, vermin, hoarding, companion animals, business food safety and road safety. Council also provides information in relevant languages to raise community awareness and support social inclusion.

### 2.2 Clean and well maintained environment

In NSW, Acts and Regulations govern waste management. Those who handle, store, transport, process, recycle and dispose of waste must follow these rules to minimise harm to human health and the environment. The NSW Environmental Protection Authority (EPA) provides leadership to ensure NSW has a fair, modern and well-regulated waste industry.

Living in a community that is clean and well maintained and serviced can positively impact feelings of safety. Addressing issues of illegal dumping and encouraging suitable rubbish clean ups and garbage collection and cleansing services ensures that the environment is maintained to a high standard.

Keeping the local community and amenities clean creates a much safer space for everyone. Graffiti, scattered rubbish and debris impact on the feeling of safety, and people feel safer in a well-maintained public space. It is well recognised that clean streets, buildings, parks and public spaces promote a sense of community. A well-maintained neighbourhood can deter vandalism and crime and create a socially connected community.

*“Providing entertainment in the public domain with community and cultural events assists in building social connection, as well as providing facilities that enable social gatherings.”*

### 2.3 Council Facilities and Community Projects

Community facilities are typically Council-owned buildings, parks and sporting fields that provide accessible and affordable space for a range of activities that benefit the community. Community facilities remain valuable community assets not only in a real estate sense but also as they create social capital by enabling community involvement and the fostering of social inclusion. Community facilities also play a key role in particular for older people, people from CALD backgrounds, and women to meet and engage in activities.

Council manages community facilities, parks and sports fields, including a library and art gallery for use by the community. These venues offer accessibility for meetings, forums, sport, cultural activities, learning opportunities, relaxation and events.

Community centres enhance the quality of community life by encouraging participation and networking within the local community and by facilitating a diverse range of activities and services that support the interests of local residents.





### Priority 3: Staying Safe in Strathfield

#### 3.1 Crime prevention through education and information

Community participation is necessary for maximum effectiveness in keeping Strathfield safe. By improving communication and information and engagement between the NSW Police Force, Council and the community, greater awareness of crime prevention and enhanced safety is achieved.

Programming information forums that target key safety issues raises community awareness and encourages community support in preventing or reducing crime. Research shows that people take more notice of information about their local community. Educating the public is one of the most important strategies for preventing crime. The basic foundation of a safer community is when the public understands neighbourhood safety and the actions they need to take to reduce their risk of crime.

Strathfield Council provides a range of crime prevention information and resources to raise community awareness in community safety, including fraud prevention, scams, prevention of break and enter, and preventing and reporting domestic violence.

#### 3.2 Keeping children safe

Strathfield Council is committed to the safety and protection of children. Child protection is a shared responsibility between Council, its employees, workers, contractors, parents/guardians, volunteers and members of the Strathfield community. Everyone that participates in Strathfield Council's activities is responsible for the care and protection of children and reporting information about child abuse. Our standards are set out in Council's Code of Conduct and Child Protection Policy.

Council will meet legal requirements to ensure that only people with valid Working with Children Checks (WWCC) are engaged in child related work. The WWCC

is an essential part of Council's recruitment process to prevent people who pose a risk to the safety of a child or young person from being employed or engaged in child related work.

#### 3.3 Keeping homeless people safe

Social exclusion is one of the primary causes for homelessness. Without strong support networks, traumatic life events can leave people with nowhere to turn. Some of the main causes for homelessness consist of domestic and family violence, poverty, unemployment or shortage of affordable housing, family breakdown, mental illness, addiction, financial difficulty, gambling or social isolation.

When people lose their homes, they often lose their social networks and support too. The feeling of not belonging in our society that many

people experience can impact their sense of self-worth and self-confidence

Homelessness is much more than the visible experience of sleeping rough on the streets. It can include living in temporary accommodation such as cars, couch-surfing, or overcrowded accommodation. Strathfield Council raises awareness about homelessness during National Homelessness Week and participates in a food appeal which makes donations to local charities.

Strathfield Council has partnered with the NSW Department of Communities and Justice (DCJ) and Wesley Mission to engage and support people sleeping rough in the Strathfield LGA.

*“The basic foundation of a safer community is when the public understands neighbourhood safety and the actions they need to take to reduce their risk of crime.”*

## Priority 4: Collaborating for community safety

### 4.1 Working with NSW Police Force

The introduction of community-based policing has helped the NSW Police Force develop a working partnership with local communities. NSW Police Force and community groups are striving to address community concerns through initiatives such as Neighbourhood Watch; Safety House; Customer Councils; Volunteers in Policing; Liquor Consultative Committees; and Lay Visitors.

Councils are also the focus of local activity and working in partnership with NSW Police Force, can often develop local solutions to local issues. Council works with Auburn and Burwood Police Area Commands (PAC) to address local crime prevention initiatives and provide community information on crime prevention and achieve safety audits to address local areas of concern.

### 4.2 Working with Health and Emergency Services

It is recognised that good preparation and well-implemented strategies can not only improve the quality of life of our residents but also save lives. From time to time there can be emergencies and a coordinated response from emergency services, health, transport and local government is essential.

Severe storms with strong winds and lightning strikes, heavy rainfall and flash flooding, and extreme heat during a heatwave are the most likely emergency and disaster impacts for Strathfield residents, workers and visitors.

Other impacts could include health emergencies such as the recent Covid epidemic as well as a major influenza outbreak causing service disruptions in the local area. It is therefore important to plan and collaborate with key stakeholders to ensure that the Strathfield community has information and access to help when needed and can feel safe at home and work.

In accordance with the State Emergency Plan, Council appoints a Local Emergency Management Officer (LEMO) to act as the organisation's co-ordinator for responding to emergency events.

The position undertakes the critical roles of:

- Council's liaison officer for disaster planning with Sydney Local Health District and emergency services such as NSW Police Force, fire brigade and state emergency services
- co-ordinates the review of procedures for responding to emergencies
- maintaining an effective communication network with all emergency response agencies
- ensures that resources are available to respond to emergencies including management of Council's Emergency Operations Centre (EOC), located at the Dutton Centre.

*“It is recognised that good preparation and well-implemented strategies can not only improve the quality of life of our residents but also save lives.”*

### 4.3 Working with State and Federal Government

Crime prevention is primarily the responsibility of state government. However, local government has a significant role in developing and delivering crime prevention at the community level. Collaborative approaches to community safety are now the norm across Australia and internationally. State and Local Government agencies are increasingly working together to implement effective community safety measures in relation to a range of factors,

including alcohol and violence, homelessness, waste management and road safety.

Federal, state and local governments are required to work together in order to solve complex problems. As a result of intergovernmental discussions, uniform national laws have been made to tackle issues such as road transport, food standards and consumer rights. By introducing uniform national laws, the three levels of government can operate together with a greater level of efficiency.

Besides the NSW Police Force, Council works with a range of government stakeholders to ensure

community safety including:

- Transport for NSW to improve road safety
- Sydney Trains during rail shutdowns and maintenance for traffic management
- Sydney Ports Authority with the Enfield Intermodal Logistics Centre with freight and warehousing
- National Heavy Vehicle Regulator for road safety
- Schools both State and Private for safety around school zones and child protection
- Environmental Protection Authority for waste management
- Department of Communities and Justice to address homelessness
- NSW Food Authority in relation to food inspections and food safety breaches
- NSW Health in relation to registration and inspection of water-cooling towers to prevent legionnaires disease
- Office of the Children's Guardian for Child Safe Standards

#### **4.4 Working with community organisations**

From networking, cooperation, coordination, collaboration and partnership are the commitments

required for community safety. Underpinning each of these commitments is the need for strong and effective participatory consultation with all stakeholders. Council collaborates with a wide range of stakeholders to implement strategies for improving safety. Council has a role in building partnerships between community organisations and individuals to promote community safety.

Council works in partnership with a range of community organisations to ensure community safety including such organisations as the Pedestrian Council of NSW, Preschools and Long Day Care Centres, Out of School Hours services, Wesley Mission to address homelessness and partnering with Escabags as a stockist, to deliver support to those needing to leave a domestic violence situation and local charities to provide food from food appeals.

Council raises awareness of safety measures in partnership with community organisations to build capacity and community resilience and raise community awareness.



# STRATHFIELD COMMUNITY SAFETY ACTION PLAN

## Priority 1: Safe Public Places

Project	Action	Partners	Year
<b>1.1 Crime Prevention through Environmental Design</b>	<ul style="list-style-type: none"> <li>Council incorporates the standard of Crime Prevention Through Environmental Design (CPTED) through all Council development and infrastructure projects, including open spaces and priority in Homebush West</li> </ul>	Planning and Development, Operations and Engineering Local Business, NSW Police Force	Years 1 to 4
	<ul style="list-style-type: none"> <li>Council conducts regular program of Safety Audits</li> </ul>	Community Development and NSW Police Force	Years 1 to 4
<b>1.2 Activating town centres and public places</b>	<ul style="list-style-type: none"> <li>Develop an Events Strategy to activate town centres and public spaces to increase community participation and enhance safety</li> </ul>	Communications/Events NSW Police Force Planning and Development	Year 2
	<ul style="list-style-type: none"> <li>Activate public domain with installation of public art</li> </ul>	Engineering and Operations, Planning, Create NSW, Transport for NSW	Year 1-2
<b>1.3 Graffiti Removal</b>	<ul style="list-style-type: none"> <li>Graffiti Education programs developed for early intervention, removal and reporting incidents</li> </ul>	Community Development NSW Police Force	Years 1 to 4
	<ul style="list-style-type: none"> <li>Deliver Graffiti Removal program and maintain Graffiti Register</li> </ul>	Engineering and Operations	Years 1 to 4
	<ul style="list-style-type: none"> <li>Deliver mural art project as a graffiti reduction and prevention strategy</li> </ul>	Engineering and Operations, Department of Communities and Justice	Year 1
<b>1.4 Surveillance by CCTV</b>	<ul style="list-style-type: none"> <li>Develop a CCTV Strategy for Strathfield to manage CCTV systems in public spaces</li> </ul>	Information Technology	Year 3
	<ul style="list-style-type: none"> <li>Respond to police requests for CCTV footage</li> </ul>	NSW Police Force	Years 1 to 4
	<ul style="list-style-type: none"> <li>Review CCTV location in line with police identified hotspots</li> </ul>	NSW Police Force	Years 1 to 4
	<ul style="list-style-type: none"> <li>Apply for grant for mobile CCTV equipment to address crime hotspots</li> </ul>	NSW Police Force	Year 2
<b>1.5 Road Safety</b>	<ul style="list-style-type: none"> <li>Continue to deliver road safety educational programs and support services</li> </ul>	Local schools and preschools, OOSH Transport for NSW, Road Safety Officer	Years 1 to 4
	<ul style="list-style-type: none"> <li>Advocate for road safety improvements, including traffic calming and pedestrian safety</li> </ul>	Traffic Committee, NSW Police Force Police, Transport for NSW, Operations and Engineering	Years 1 to 4





## Priority 2: Safe Neighbourhoods

Project	Action	Partners	Year
<b>2.1 Social Cohesion and Resilience</b>	<ul style="list-style-type: none"> <li>Provide events to bring community together</li> </ul>	Communications/Events Local Business	Years 1 to 4
	<ul style="list-style-type: none"> <li>Provide activities and programs for vulnerable groups</li> </ul>	Community Development Community organisations	Years 1 to 4
	<ul style="list-style-type: none"> <li>Translate Council information in community languages</li> </ul>	Community Development, Communications	Years 1 to 4
	<ul style="list-style-type: none"> <li>Raise awareness on International Days that promote social inclusion and safety</li> </ul>	Community Development/ Communications	Years 1 to 4
	<ul style="list-style-type: none"> <li>Provide Community Safety education forums to inform on a range of safety issues</li> </ul>	Community Development/ Communications, NSW Police Force	Years 1 to 4
<b>2.2 Clean and well maintained environment</b>	<ul style="list-style-type: none"> <li>Provide a quality waste, recycling and cleansing service in neighbourhoods, streets, town centres and parks</li> </ul>	Waste and Cleansing	Years 1 to 4
	<ul style="list-style-type: none"> <li>Ensure compliance in water, noise and dust pollution</li> </ul>	Health and Environment/ Sustainability Rangers	Years 1 to 4
	<ul style="list-style-type: none"> <li>Manage illegal dumping and abandoned shopping trolleys</li> </ul>	Waste and Cleansing Rangers	Years 1 to 4
	<ul style="list-style-type: none"> <li>Pruning trees to reduce overhanging branches and improve street lighting</li> </ul>	Health and Environment Engineering and Operations	Years 1 to 4
<b>2.3 Community Facilities and Projects</b>	<ul style="list-style-type: none"> <li>Ensure safety measures for community accessing library after hours (when unstaffed)</li> </ul>	Library, Rangers, IT	Years 1 to 4
	<ul style="list-style-type: none"> <li>Ensure effective lighting in parks and streets and community facilities</li> </ul>	Engineering and Operations	Years 1 to 4
	<ul style="list-style-type: none"> <li>Ensure safe and well maintained cycleways and footpaths</li> </ul>	Engineering and Operations	Years 1 to 4

### Priority 3: Staying Safe

Project	Action	Partners	Year
<b>3.1 Crime prevention through education and information</b>	<ul style="list-style-type: none"> <li>Identify community safety issues for prioritising community awareness campaigns (fraud, scams, domestic violence, malicious property damage)</li> </ul>	NSW Police Force Community Development	Years 1 to 4
	<ul style="list-style-type: none"> <li>Hold events to raise awareness of violence against women</li> </ul>	Community Development, NSW Police Force, Community Organisations	Years 1 to 4
	<ul style="list-style-type: none"> <li>Provide Community Safety education forums to inform on a range of safety issues</li> </ul>	Community Development/ NSW Police Force	Years 1 to 4
<b>3.2 Keeping children safe</b>	<ul style="list-style-type: none"> <li>Comply with Child Protection Policy</li> </ul>	People and Culture Governance	Years 1 to 4
	<ul style="list-style-type: none"> <li>Raise awareness on child safety</li> </ul>	Office of Children's Guardian Community Development	Years 1 to 4
	<ul style="list-style-type: none"> <li>Code of Conduct training including child safety</li> </ul>	Governance People and Culture	Years 1 to 4
	<ul style="list-style-type: none"> <li>Working with Children Check (WWCC) on recruitment for staff in child related employment</li> </ul>	People and Culture	Years 1 to 4
<b>3.3 Keeping homeless safe</b>	<ul style="list-style-type: none"> <li>Continue to participate in Rough Sleeper program</li> </ul>	Community Development Department Communities and Justice	Years 1 to 4
	<ul style="list-style-type: none"> <li>Continue with raising awareness on Homelessness</li> </ul>	Community Development	Years 1 to 4
	<ul style="list-style-type: none"> <li>Continue annual food appeal as part of Homelessness Week campaign</li> </ul>	Community Development, Rangers, Local Charities	Years 1 to 4



# 8 TIPS You can do now to prepare for floods

- 1 KNOW YOUR FLOOD RISK
- 2 KNOW WHERE TO GO
- 3 KNOW WHO TO CALL
- 4 KNOW YOUR PLAN
- 5 GET READY
- 6 GET OUT
- 7 GET HELP
- 8 LISTEN TO YOUR LOCAL RADIO

Emergency Help in Flood, Storm and Tsunami Call 132 500

For more info: [www.floodsafe.com.au](http://www.floodsafe.com.au)

NSWSES f /NSWSES YouTube /NSWSES

SES FloodSafe NRMA INSURANCE



## Priority 4: Collaborating for a safe community

Project	Action	Partners	Year
<b>4.1 Working with Police</b>	<ul style="list-style-type: none"> <li>Regularly meet with police on community safety issues</li> </ul>	NSW Police Force Community Development	Years 1 to 4
	<ul style="list-style-type: none"> <li>Attend Safety Audits quarterly</li> </ul>	NSW Police Force Community Development	Years 1 to 4
	<ul style="list-style-type: none"> <li>Collaborate with police to deliver Community Safety Strategies as part of crime prevention</li> </ul>	NSW Police Force Community Development	Years 1 to 4
<b>4.2 Working with Health and Emergency Services</b>	<ul style="list-style-type: none"> <li>Work in partnership with SLHD to deliver public health education</li> </ul>	SLHD, Community Development	Years 1 to 4
	<ul style="list-style-type: none"> <li>Attend meetings to ensure compliance with State Emergency Plan</li> </ul>	LEMO, State Emergency Services, SLHD	Years 1 to 4
<b>4.3 Working with State and Federal Government</b>	<ul style="list-style-type: none"> <li>Advocate with government for community safety initiatives and grant funding</li> </ul>	State and Federal agencies, Council	Years 1 to 4
	<ul style="list-style-type: none"> <li>Deliver safety services in line with government legislation and standards</li> </ul>	Council and State Government agencies	Years 1 to 4
<b>4.4 Working with Community Organisations</b>	<ul style="list-style-type: none"> <li>Collaborate with community groups to deliver safety strategy</li> </ul>	Community Development Community Organisations	Years 1 to 4
	<ul style="list-style-type: none"> <li>Collaborate with community groups for capacity building to support safety</li> </ul>	Community Development and Community Groups	Years 1 to 4

## APPENDIX: STRATHFIELD CRIME STATISTICS

NSW Bureau of Crime Statistics and Research is a statistical and research agency within the Department of Communities and Justice. Crime statistics are recorded for local government areas and identify incidents of major crime and trends in accordance with population. Strathfield LGA has remained stable in its recorded incidents of major crime with the exception of 'other stealing offences' which has increased by 40.5% between 2021-2022

<b>NSW Recorded Crime Statistics 2018 - 2022</b>		<a href="#">Definitions and</a>	
<b>Number of recorded incidents and rate per 100,000 population, 24-month and 60-month tr</b>			
<b>Strathfield Local Government Area</b>			
		Jan-Dec 2018	Jan
<i>Offence group</i>	<i>Offence type</i>	<i>Number of incidents</i>	<i>Rate per 100,000 population</i>
			<i>Number of incidents</i>
The major offences	Murder <sup>a</sup>	0	0.0
	Domestic violence related assault	141	312.6
	Non-domestic violence related assault	152	337.0
	Sexual assault	15	33.3
	Sexual touching, sexual act and other sexual offences	38	84.2
	Robbery	10	22.2
	Break and enter dwelling	123	272.7
	Break and enter non-dwelling	27	59.9
	Motor vehicle theft	58	128.6
	Steal from motor vehicle	187	414.5
	Steal from retail store	84	186.2
	Other stealing offences	270	598.5
	Malicious damage to property	205	454.4

[and explanations](#)

**24-month trend and Local Government Areas rankings (for 2022)**

Number of incidents	Jan-Dec 2019	Jan-Dec 2020		Jan-Dec 2021		Jan-Dec 2022		24-month trend**	60-month trend**	2022 LGA Rank*
	Rate per 100,000 population	Number of incidents	Rate per 100,000 population	Number of incidents	Rate per 100,000 population	Number of incidents	Rate per 100,000 population			
0	0.0	0	0.0	0	0.0	0	0.0	nc**	nc**	
141	300.7	135	282.6	122	255.4	133	278.4	Stable	Stable	92
116	247.4	124	259.6	100	209.3	101	211.4	Stable	-9.7%	92
13	27.7	11	23.0	12	25.1	28	58.6	nc**	nc**	107
29	61.8	26	54.4	21	44.0	22	46.1	Stable	-12.8%	
17	36.3	6	12.6	9	18.8	7	14.7	nc**	nc**	62
134	285.7	108	226.1	115	240.8	139	291.0	Stable	Stable	46
47	100.2	25	52.3	16	33.5	29	60.7	nc**	nc**	85
88	187.6	74	154.9	44	92.1	51	106.8	Stable	Stable	89
175	373.2	118	247.0	140	293.1	178	372.6	Stable	Stable	42
148	315.6	84	175.9	105	219.8	140	293.1	Stable	Stable	30
297	633.3	217	454.3	165	345.4	232	485.7	40.6%	-3.7%	50
214	456.3	142	297.3	117	244.9	150	314.0	Stable	-7.5%	104

STRATHFIELD MUNICIPAL COUNCIL

# COMMUNITY SAFETY STRATEGY

2024 - 2028



65 Homebush Road, Strathfield NSW 2135  
02 9748 9999 | [www.strathfield.nsw.gov.au](http://www.strathfield.nsw.gov.au)

**Community Safety Strategy endorsed by  
Auburn & Burwood Police Area Command**



StrathfieldCouncil



StrathfieldMC



StrathfieldCouncil  
StrathfieldEvents



StrathfieldTV